

ASV10 - DATASHEET

TECHNICAL FEATURES

Max. diameter:	19 mm
Max. thickness:	4,0 mm
Opening pressure:	2 - 6 mbar
Closing pressure:	~1 mbar
Weight:	0,7 - 0,73 g

STOCKING

Store in a dry environment, with temperature range between 2°C and 40°C and humidity between 30 and 75%.

VALVE MATERIALS

Valve body:	Polyethylene
Oil:	Silicon oil
Black membrane:	NBR60 QG A (food)
Membrane holder:	Polystyrene

SEALING FEATURES

Valve is sealable with:	Polyethylene (LDPE, LLDPE)
Sealing temperature range:	130° - 200°
Sealing pressure range:	2 - 6 bars

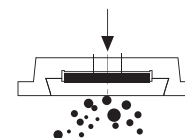
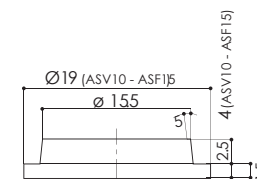
PACKING

Packed in boxes securely fastened on a Europallet.

- **Approved for food contact**
- **Ideal for coffee beans**

APPROVALS

UK	Plastic for food contact application. A code of practice for safety in use, revised edition 1986 statutory instruments 1996, N. 2817.
UE	Commission Directives 90/128, 92/39, 93/9, 95/3, 96/11, 97/48 relating to plastic materials and articles intended to come to contact with foodstuffs
USA	Compliance to FDA 21 CFR 177.1520 April 2014.



SEZ. AA

