

# ASTC - DATASHEET

## TECHNICAL FEATURES

**Max. diameter:** 20,2 mm

**Max. thickness:** 5,5 mm

**Opening pressure:** 2 - 6 mbar

**Closing pressure:** ~0,5 mbar

**Weight:** 1,02 g

## STOCKING

Store in a dry environment, with temperature range between 2°C and 40°C and humidity between 30 and 75%.

## VALVE MATERIALS

**Valve body:** Polyethylene

**Oil:** Silicon oil

**Black membrane:** NBR60 QG A (food)

**Membrane holder:** Polystyrene

**Filter:** Plain paper manufactured from a specially selected blend of high quality manila hemp, cellulose and thermoplastic fibers

## SEALING FEATURES

**Valve is sealable with:** Polyethylene (LDPE, LLDPE)

**Sealing temperature range:** 130° - 200°

**Sealing pressure range:** 2 - 6 bars

## PACKING

Packed in boxes securely fastened on a Europallet.

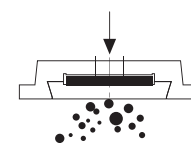
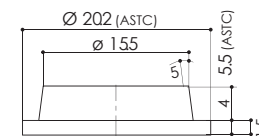
- Approved for food contact
- Ideal for coffee beans
- Ideal for ground coffee

## APPROVALS

**UK** Plastic for food contact application. A code of practice for safety in use, revised edition 1986 statutory instruments 1996, N. 2817.

**UE** Commission Directives 90/128, 92/39, 93/9, 95/3, 96/11, 97/48 relating to plastic materials and articles intended to come to contact with foodstuffs

**USA** Compliance to FDA 21 CFR 177.1520 April 2014.



SEZ. AA

